

BEST MANAGEMENT PRODUCTS, INC.

SNOUT OIL & DEBRIS STOP

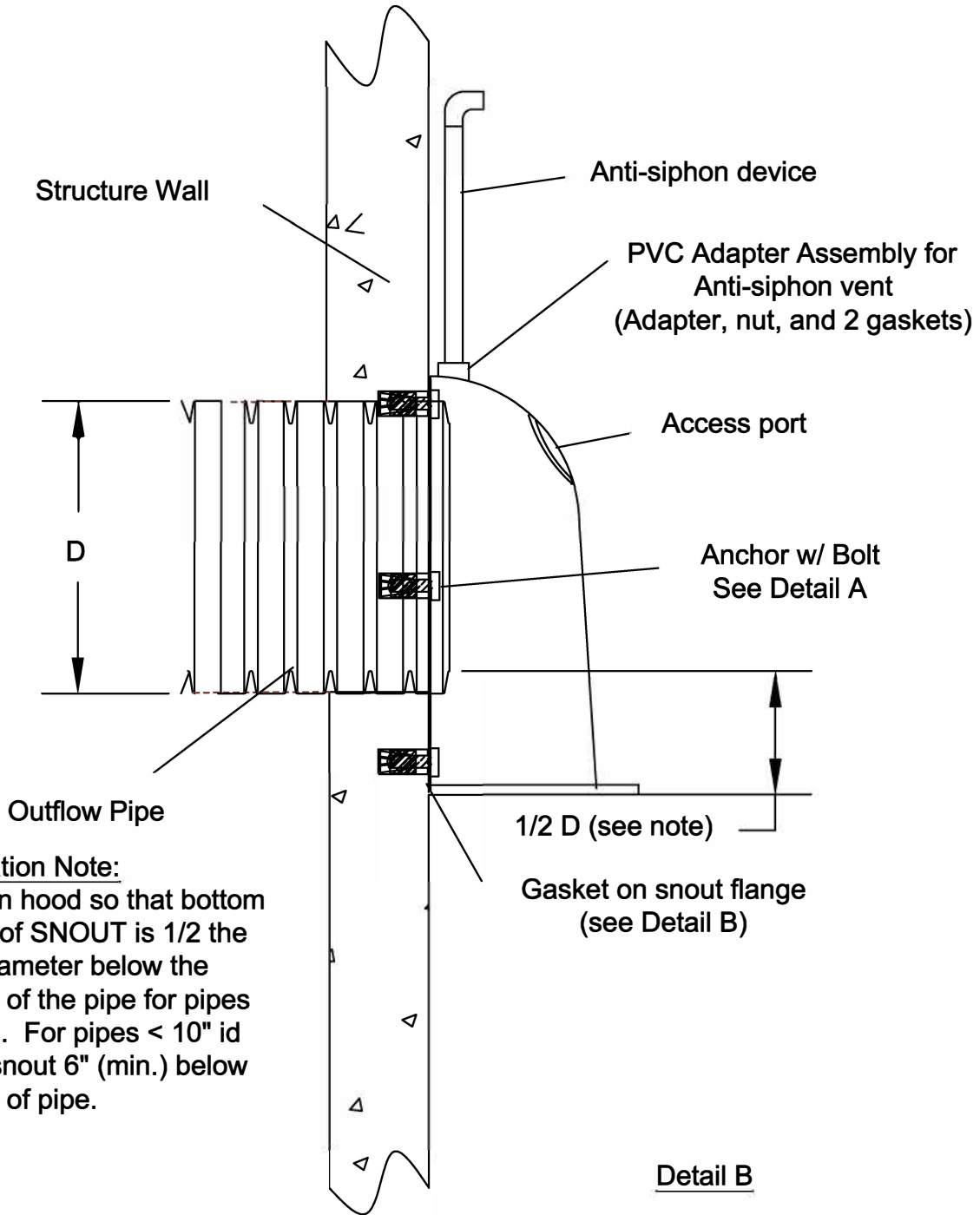
DRAWING NUMBER: IN-SN

INSTALLATION DIAGRAM (TYPICAL)



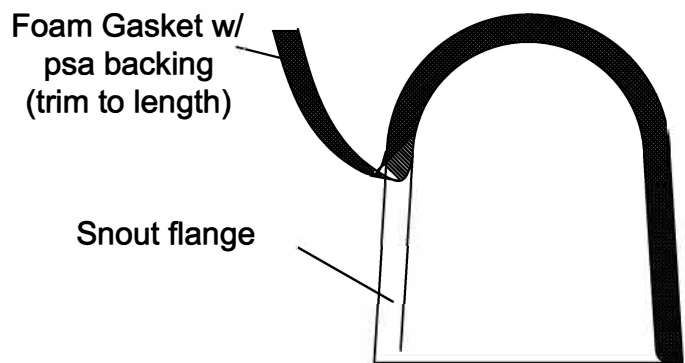
(317) 346-4110
www.drainagesolutionsinc.com

U.S. PATENT #6126817 ADDITIONAL PATENTS PENDING



Installation Note:
Position hood so that bottom flange of SNOUT is 1/2 the pipe diameter below the bottom of the pipe for pipes >12" id. For pipes < 10" id place snout 6" (min.) below bottom of pipe.

Detail B



Detail A

