



Anti-Siphon Freezeless Yard Hydrants Model Y95

SPECIFICATIONS:

MODEL 50HF BACKFLOW PREVENTER -

Patent Pending

- ASSE 1052 Approved
- Listed by IAPMO
- Field Testable
- Two Independent Check Valves
- Drains automatically when hose is removed
- No spray back

FEATURES:

TAMPER PROOF - The hinged door lock uses the same tee key that operates hydrant to prevent unauthorized use.

ONE PIECE VARIABLE FLOW PLUNGER - Large cushion type seal for longer life - is not easily damaged and assures shut-off even when foreign particles are present. Automatic drain feature - plunger opens drain to prevent freezing when hose is removed.

VALVE SEAT - Permanent type brass valve body with hemispherical seating surface.

PACKING - EPDM rubber with adjustable packing nut.

BOX - Deep box, brass casting.

FINISH - Brass box, door and head casting.

FEMALE INLET - 3/4" N.P.T

DRAIN HOLE - 1/8" N.P.T.

CASING - 1" galvanized steel pipe

Optional - 1" brass pipe

OPERATING ROD - 3/8" galvanized steel pipe

Optional - 3/8" brass pipe

MAX PRESSURE - 125 p.s.i.

MAX TEMPERATURE - 120° F

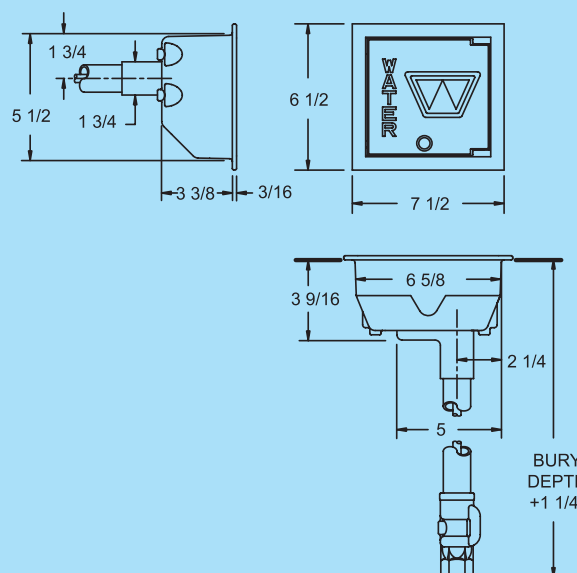
SHIPPING WEIGHT -

Bury Depth (ft)	1	2	3	4	5	6	7
Weight (lbs)	14	16	18	21	23	26	28

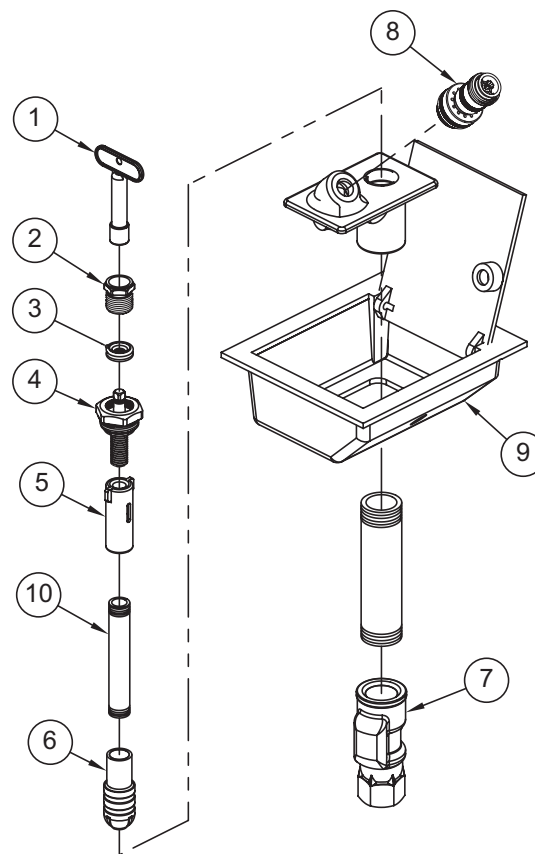
Backflow Preventer replacement is recommended every 3-5 years.



Rough-In Dimensions



When ordering, specify model number, inlet and finish.



MODEL Y95 PARTS LIST

ITEM	PART#	DESCRIPTION
1	50010	Tee Key
2	30107	Packing Nut
3	30247	EPDM Packing
4	55176	Head Nut Assembly
5	10109	Yoke Nut
6	10105	Plunger
7	10018	Valve Body
8	50HF-BR	50HF Vacuum Breaker-Brass
9	55020	Box Assembly
10		3/8" OPERATING PIPE (Bury Depth & Length)
	10031	1' Bury (4-1/8" long)
	10032	2' Bury (16-1/8" long)
	10033	3' Bury (28-1/8" long)
	10034	4' Bury (40-1/8" long)
	10035	5' Bury (52-1/8" long)
	10036	6' Bury (64-1/8" long)
	10037	7' Bury (76-1/8" long)
	RK-Y95	Repair Kit (Includes Items 1-6)



**DRAINAGE
SOLUTIONS, INC**

(317) 346-4110

www.drainagesolutionsinc.com